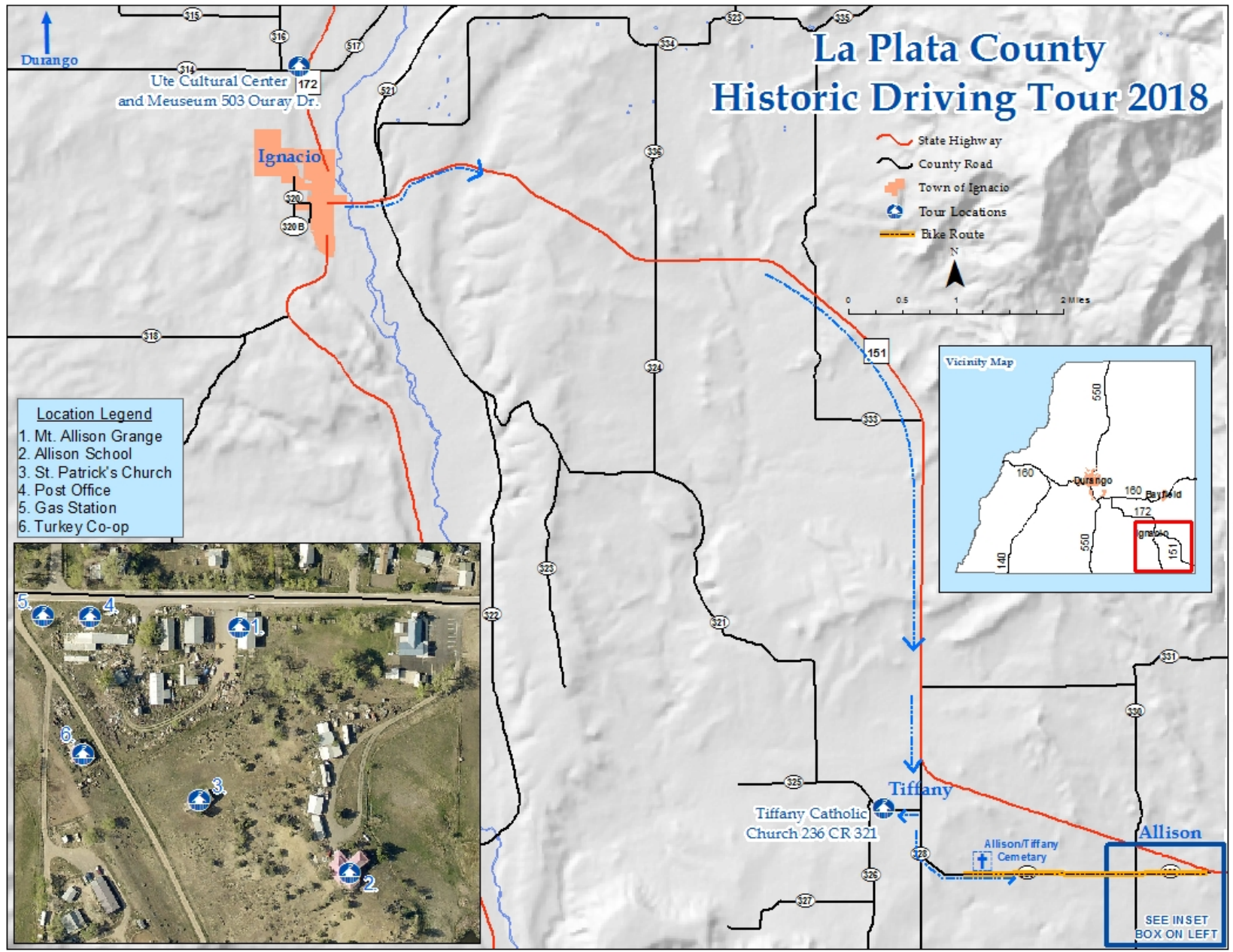


# La Plata County Historic Driving Tour 2018



## La Plata County Register of Historic Places

- Fifteen properties have been designated to date
- Properties include the Old Ft. Lewis Campus, Florida Baptist Church and the Lower Spring Creek School House
- Designation is free, voluntary, and does not include regulatory restrictions
- All properties help celebrate the County's rich history and receive a bronze plaque

Disclaimer: La Plata County, including its officials, employees and agents, does not warrant the condition or safety of the properties and sites on this tour. By participating in this tour, participants agree to assume all risk, responsibility and liability for all actions taken on the properties and sites subject to this tour.

# Historic Preservation Commission -5th Annual- Historic Driving Tour



## Southeast La Plata County: Tiffany & Allison

Saturday May 19th, 2018  
9am to 4pm



## ITINERARY:

### 1. 9:00am Ute Cultural Center and Museum

- Presentations of Ute History, History of Anglo and Hispanic Influence, Tracks Across Borders Scenic Railroad Byway

### 2. 11:00am Tiffany Catholic Church Tour

- Historic Town Sites.

### 3. 12:30pm Mount Allison Grange

- Lunch and Presentation of the Mount Allison Grange
- Park at the Allison Community Presbyterian Church parking lot. Church will be open from 12:30pm-4:00pm for self guided tours.

### 4. 2:00pm—4:00pm Walking Tour of Allison

- Allison School, St Patrick's Catholic Church, Allison Turkey Co-op, Gas Station and Post Office.

#### NOTE:

-A \$10 lunch will be served by the Mt. Allison Grange. Please RSVP to Karen Baxter by May 11th, 2018 at 970-259-1595

-You will be visiting private property please be respectful

-PLEASE DO NOT BRING YOUR DOGS.

-Car-pooling is encouraged.

**This is a bike friendly event!**

- Bicyclists park at Allison-Tiffany Cemetery along CR329.

- Six mile round trip from Tiffany to Allison.

## La Plata County

### Historic Preservation Review Commission

Mission: To provide an application and review process for residents to receive Historic Landmark designation by the La Plata County Board of County Commissioners, to increase awareness of historic and cultural heritage as embodied in these designated historic landmarks, to provide educational opportunities to increase public appreciation of the County's unique heritage, and to increase economic and financial benefits through heritage-tourism.

### 1. 9:00am to 10:30am- Ute Cultural Center & Museum.

#### 503 Ouray Dr. Ignacio

The Ute people are the oldest residents of

Colorado, inhabiting the mountains and vast areas of Colorado, Utah, Wyoming,

Eastern Nevada, Northern New Mexico and Arizona. According to tribal history handed down from generation to

generation, our people lived here since the beginning of time.

\*Introduction by Dr. Andrew Gulliford and Speakers: Mr. A. Naranjo, Dr. Danny Jaques and John Porco



### 2. 11:00am to 12:00pm- Tiffany Catholic Church

#### 236 County Road 321 Tiffany

The adobe church was constructed in 1928 by local residents. Services are held annually on the feast day of St. Antonio in June. (5LP8912)

\*Speaker Margaret Lucero



### 3. 12:30pm to 2:00pm- Mount Allison Grange

#### 2600 County Road 329

Established in 1916, the hall was constructed in 1920. The Grange is in use today and hosts a variety of events.

\*Speaker Yvonne Chapman



### 4. 2:00pm to 4:00pm- Walking tour of Allison

\*Speakers Ruth Lambert, Jill Seyfarth, and John Porco

#### St Patrick's Catholic Church

The church was built by local residents in 1925. The church was constructed of adobe bricks and retains the original windows. (5LP8936)



#### Hiveley Gas Station

The gas station was constructed in about 1925 and first operated by Mr. Hiveley. It was later known as Bay Gas and it operated through the 1950s. (5LP8918)



#### Allison School

Constructed in 1906 and consisted of three rooms.

An addition to the back/north was constructed in the 1940s.

The school is currently a private home. (5LP8920)



#### Turkey Packers Co-op

Originally a 1881 railroad warehouse, the building was acquired by the Co-op in the 1930s. Turkeys were brought in from local farms, processed, and shipped east during the Depression and WWII. (5LP 8928)

